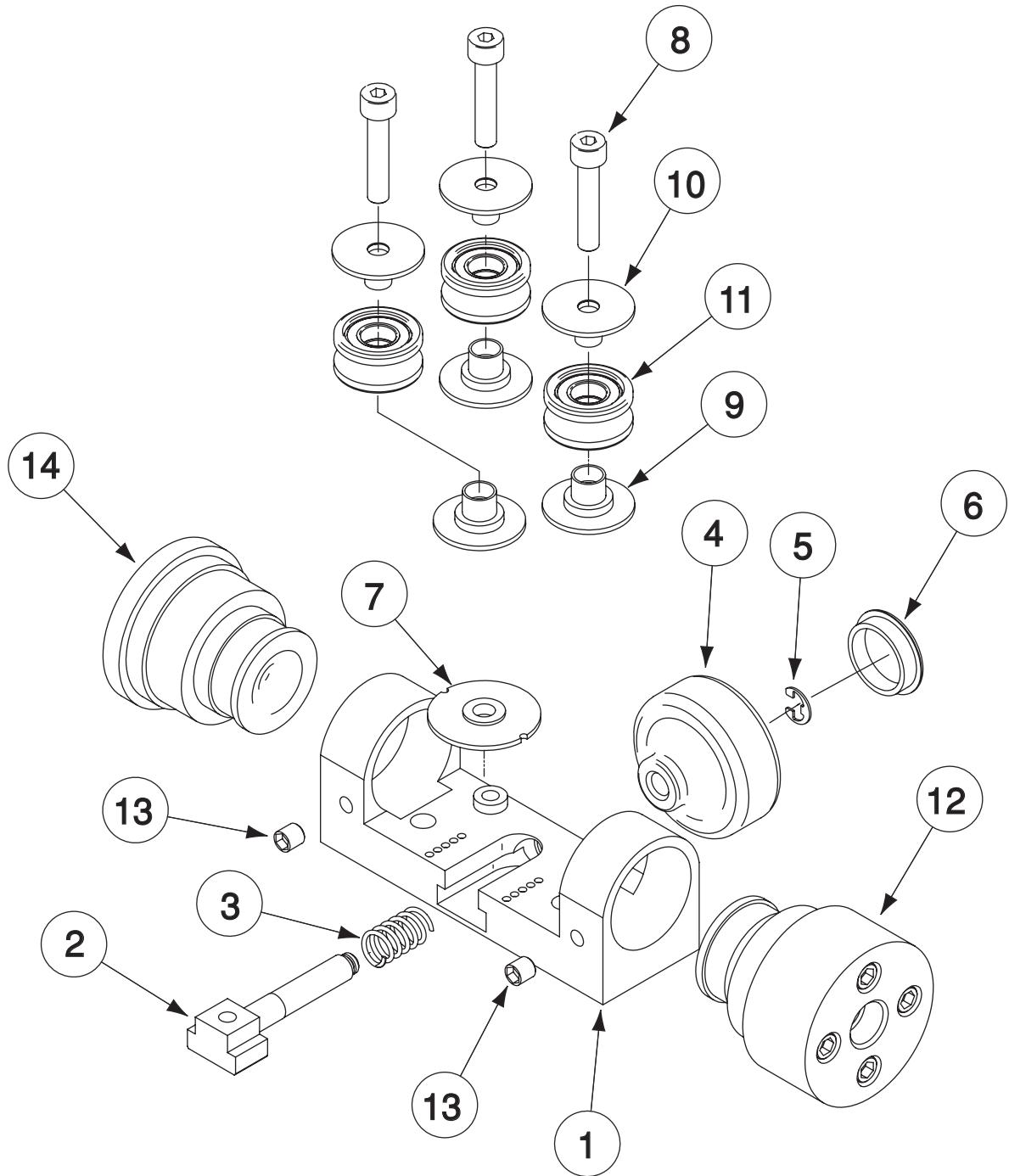


Solid Wire Straightener



Index of Sub Assemblies
Part Numbers
Index of Sub Assemblies
Part Numbers
Index of Sub Assemblies
Part Numbers
Index of Sub Assemblies
Part Numbers

Indicates a change this printing.

Use only the parts marked "x" in the column under the heading number called for in the model index page.

ITEM	DESCRIPTION	PART NO.	QTY.	1	2	3	4	5	6	7	8	9
1	Wire Straightener, Includes: Housing	L11138-2 M19374-2	1 1	X X								
2	Shaft	S24597	1	X								
3	Spring	T11862-61	1	X								
4	Knob	S24599	1	X								
5	Retaining Ring	S9776-58	1	X								
6	Plug Button	T10397-4	1	X								
7	Indicator Plate	S24598-1	1	X								
8	Metric Screw	T14731-54	3	X								
9	Insulator Bushing (Bottom)	S24601-1	3	X								
10	Insulator Bushing (Top)	S24601-2	3	X								
11	Idler Roll Assembly	S24251	3	X								
12	Ball Bushing Assembly	M18947-3	1	X								
13	Set Screw	S11604-10	2	X								
14	Bushing & Base Assembly	M21811	1	X								



Index of Sub Assemblies
 Sub Assembly Illustration
 Index of Sub Assemblies
 Sub Assembly Illustration
 Index of Sub Assemblies
 Sub Assembly Illustration
 Index of Sub Assemblies
 Sub Assembly Illustration